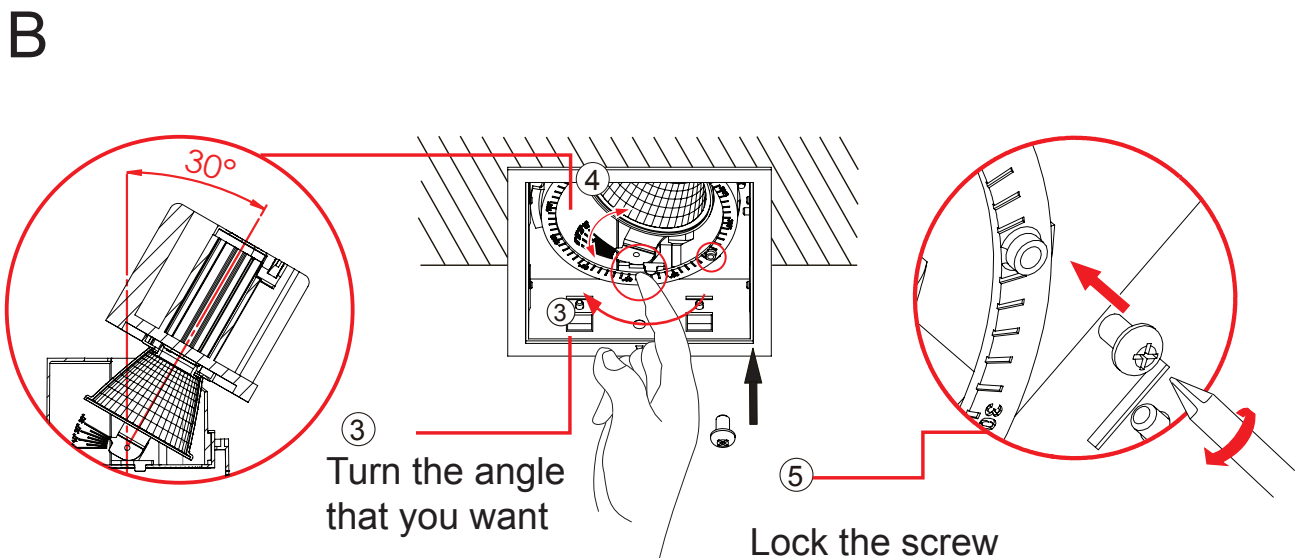
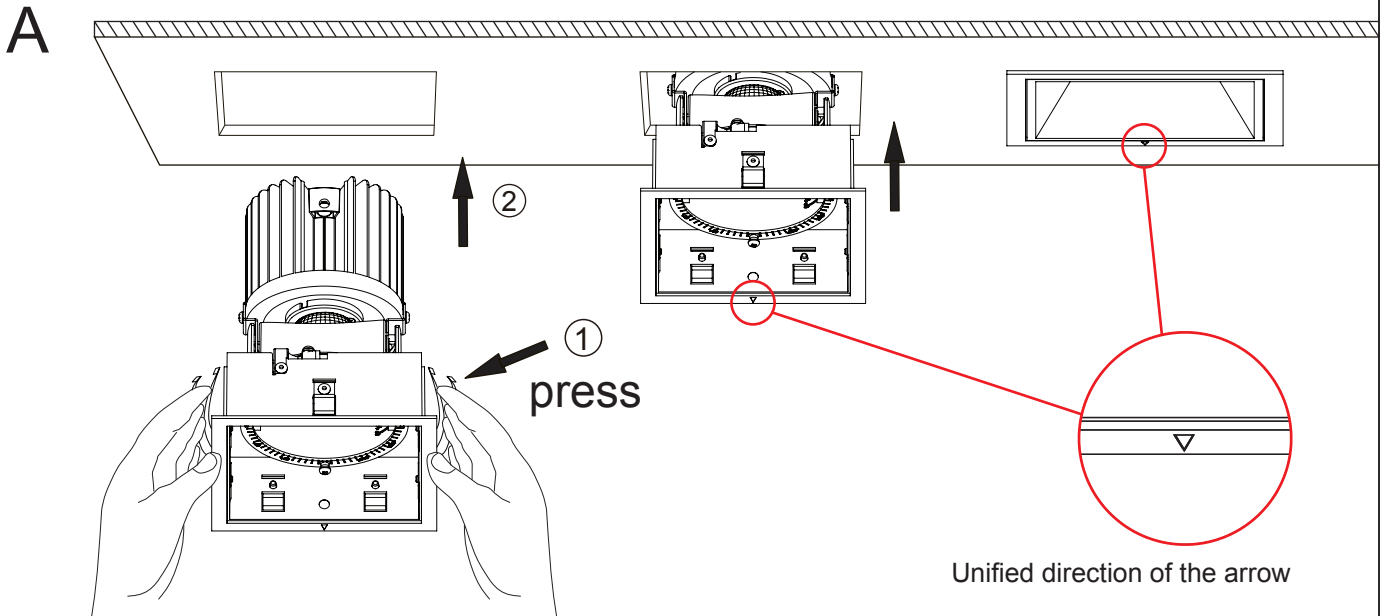


INSTALLATION INSTRUCTION

- 1.The fixture is for LED.
- 2.Before installation, make sure that the power supply is off.
- 3.Follow the steps as down below for installation
- 4.After finishing every step, tighten the screws, have the fixture fixed, then connect the power supply.
- 5.It is recommended that these products are installed by a qualified electrician.



Tilt: $0^{\circ}\sim 30^{\circ}$
Rotate:
($0^{\circ}.90^{\circ}.180^{\circ}.270^{\circ}$)

